

Digital Full Color Production Printers

RICOH Pro C5410S/C5400S

✓ Copier ✓ Printer ✓ Facsimile ✓ Scanner

RICOH
imagine. change.



**RICOH Pro
C5410S**
80
ppm
black & white
and full-color

**RICOH Pro
C5400S**
65
ppm
black & white
and full-color

The versatility to color your world.



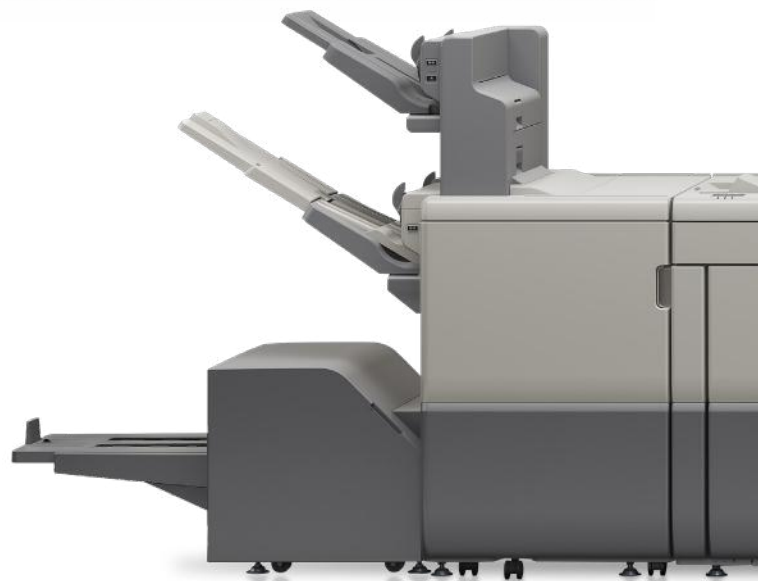
Need a printer that delivers professional-grade results within a flexible footprint?

Look no further than the RICOH Pro C5410S/C5400S.



The RICOH Pro C5400S Series enables print service providers (PSPs), in-plants, graphic designers, and marketing departments to produce consistent repeatable outcomes by adapting to your unique printing requirements, no matter the industry. Delivering exceptional image quality, flexible media handling, and advanced finishing options, this series empowers you to take on more jobs and grow your business.

Whether you're producing essential business documents, high-impact marketing materials, or innovative applications, the RICOH Pro C5410S/C5400S empower you to print efficiently, securely, and with outstanding quality — every time. An intuitive graphic user interface makes operation effortless, allowing your team to work smarter, not harder. Advanced security features help ensure your data stays protected for worry-free printing.





Driving sustainability for our future.

The RICOH Pro C5410S/C5400S sets a new standard for eco-friendly production printing—delivering top-tier performance while helping you meet your sustainability goals.

Its industry-leading design features 25% post-consumer recycled plastics and 21% electric furnace steel, reducing environmental impact without sacrificing durability. The innovative toner both enhances color accuracy and is eco-friendly, while sustainability features like the optional staple-less binding help minimize waste and eliminate the need to stock and dispose of staples.



The right features for innovative printing.

The RICOH Pro C5410S/C5400S redefines what's possible in digital color production, delivering exceptional results across every facet of your operation. These powerful yet compact systems provide the flexibility, reliability, and performance to meet your most demanding print challenges while supporting your long-term business growth.



Performance & Quality

Precision that drives your business forward

Engineered to meet the demands of commercial printing, the RICOH Pro C5410S/C5400S deliver consistently vibrant, high-resolution prints even in large volumes.

- Exceptional image quality with VCSEL Laser resolutions up to 2400 × 4800 dpi.
- Enhanced registration to enable complex print applications.
- Wide array of advanced inline finishing options to expand your offerings.

Media & Finishing

Versatility meets efficiency

Flexible media handling and advanced finishing capabilities enable you to bring specialty jobs in-house, enhancing efficiency and reducing outsourcing costs.

- Supports oversize printing up to 13" x 49.6"
- Supports printing on a wide range of media up to 360gsm, including coated, text, linen, and cover stocks.
- Boost your productivity and achieve exceptional output quality with the optional envelope fuser unit, ensuring greater performance and superior results for more efficient and impressive output when printing on envelopes.
- Industry-leading staple-less binding up to 16 sheets creates an environmentally-friendly way to present documents.



Productivity & Ease of Use

Maximize uptime. Minimize effort.

Streamline workflows and maximize output with fast warm-up times, expandable paper capacity, and an intuitive user interface.

- Quick warm-up: Less than 30 seconds in standard mode.
- High-speed output: Up to 80 ppm (C5410S) / 65 ppm (C5400S).
- Advanced scanning: Up to 150/300 ipm with single-pass color duplex.
- Maximum paper capacity of 8,500 sheets.
- Enhanced durability: Max monthly volume - 150K impressions, and a Print duty cycle* - 1.5M. (Figures based on LT size sheets).
- Optional Trained Customer Replaceable units for maximized uptime performance.
- Complete tasks quickly and easily using the user-friendly 10.1" Android™-based Smart Operation Panel.

* Maximum durable impressions per month that the printer can run.
When the printer runs the Duty Cycle every month, 60 months guarantee cannot be applied.





Managing a transitioning labor market.

The RICOH Pro C5400S Series' Smart Operator Panel and optional Fiery® Command WorkStation make it easy for operators of all skill levels to achieve professional results.

Simplify training, boost productivity, and improve profitability with a system designed to adapt to an evolving labor market.

1 Trimmer Unit TR5050*

Face Trim Unit for SR5120 Booklet Finisher

2 Booklet Finisher SR5120*

Produce full-color booklets in-house and in-line:
Choose the 3,500-Sheet SR5120 Booklet Finisher to create saddle-stitch booklets up to 30 sheets/120 pages. For fully automated wire-bound booklets choose the GBC StreamWire®. For Square back booklets choose Plockmatic SBT® or PBM435e®.

3 High-Capacity Stacker SK5040*

A 5,000-sheet stacker with a rollaway cart quickly moves large output volumes to offline binding or packing and shipping.

4 Multi-Folding Unit FD5040*

Four-Position Inline Folding Unit

5 Cover Interposer Tray CI5040*

Two-tray Cover Interposer to easily feed preprinted inserts and covers into your workflow.



6 Buffer Pass Unit Type S9*

Reduce toner adhesion on stacked, coated paper when you use the optional Buffer Pass Unit to cool media before sending it to the finishing unit.

7 Single-pass document feeder*

Fast scanning - up to 150/300 ipm with single-pass color duplex, allowing you to scan documents as small as a business card.

8 Vacuum Feed LCIT (RT5150)*

Extend print runs and minimize interruptions by bridging three 4,400-sheet trays.

9 Vacuum Feed Banner Sheet Tray Type S9*

Adding the optional banner sheet tray provides input sizes up to 13" × 27.5".

10 Multi Bypass Tray BY5020*

Feed up to 500 sheets of specialty stocks, including sizes up to 19.2" (extends up to 13" × 27.5" by adding the optional Multi Bypass Banner Sheet Tray Type S9°) and expand what you can offer customers.

Be known for superb reproduction quality:

Deliver brilliant color and smooth, subtle gradations with Vertical Cavity Surface Emitting Laser (VCSEL) and PxP-EQR toner technology.

Trained Customer Replaceable Units° (TCRUs)

allow you to execute routine maintenance on your schedule, ensuring the system is up and running when you need it most.

Staple-less Binding**

Industry-leading staple-less binding up to 16 sheets for minimized waste. Eliminate the need to stock and dispose of staples.

Other advanced finishing options such as the Plockmatic 435e/450e°, Plockmatic CT XL°, and GBC Streampunch Plus°.

Dual Controller Options:

The RICOH Pro C5400 offers the standard GW Controller and two Fiery® Controllers° options for environments with higher color management and processing power requirements.

*Optional

°Not shown

Power, precision, and performance **optimized for production.**



Complement offset printing with digital capabilities

Seamlessly balance traditional offset and high-quality digital printing with the RICOH Pro C5400S Series. Handle short-run and reprint jobs with speed, precision, and cost-efficiency, reducing reliance on manual workflows while maintaining superior image quality and color consistency.



Expand your print capabilities

Optimize your print operation with your choice of two Fiery® controllers built on the secure FS-600 platform. Configure your setup with a variety of large capacity paper trays, long-sheet feeders, and professional finishing options to streamline production, consolidate workflows, and enable on-demand printing at multiple locations.



Enhanced registration for precision printing

Designed with feedback from our most demanding customers, the RICOH Pro C5400S Series offers precise front-to-back and page-to-page alignment. Our new and improved mechanical registration system delivers precision unprecedented in its product class, making it ideal for applications requiring pinpoint accuracy.



Wide range of substrates for limitless creativity

Handle diverse print applications effortlessly with support for media up to 360gsm. Whether you're printing on bond, coated, textured, carbonless, or synthetic stocks, the RICOH Pro C5400S Series offers seamless integration with its onboard media catalog, allowing you to expand your offerings without compromising quality.



Uncompromising quality, every time

Deliver stunning, consistent print outcomes with Ricoh's advanced color management tools. The RICOH Pro C5400S Series maintains exceptional color fidelity and crisp resolution across every job, ensuring your materials are always professional and impactful.



Inline professional finishing

Automate and streamline finishing with inline options for saddle stitching, square folding, stacking, punching, multi-folding, and more. The RICOH Pro C5400S Series helps you eliminate bottlenecks in your workflow and reduces the need for manual intervention, enhancing efficiency and accelerating time to market.

RICOH Pro C5410S/C5400S

System specifications

Specifications

Standard Modes	Copy/Print/Scan
Print/Copy Process	4 drum dry electrostatic transfer system with internal transfer belt Oil-less belt fusing method Color PxP-EQR Toner
Fusing	Sensor and Optional Mechanical Registration
Toner	Registration
Paper Registration	220 sheets (81.4gsm)/250 sheets (64-68gsm) ADF with single-pass color duplex scanning at up to 300 ipm
Document Feeder	Optional
Fax	Full Color 10.1" Smart Operation Panel
Operation Panel	Pro C5410S: 80 ppm (52 - 256 gsm) 56 ppm (256.1 - 360 gsm) Pro C5400S: 65 ppm (52 - 256 gsm) 50 ppm (256.1 - 360 gsm)
Output Speed (Letter)	Pro C5410S: (FC) 9.6 sec or less, short time mode: 6.7 sec or less (B&W) 8.1 sec or less, short time mode: 6.4 sec or less Pro C5400S: (FC) 10.6 sec or less, short time mode: 7.7 sec or less, (B&W) 9.2 sec or less, Short time mode: 7.5 sec or less
First Copy Output Time	150K (based on A4/LT size paper) VCSEL: 2400 x 4800 dpi Print: 1200 x 1200 dpi Copy: 600dpi Scan: 600dpi
Max Monthly Volume	Tray 1: 2,500 sheets (1,250 x 2) Trays 2 - 3: 550 x 2 Bypass Tray: 250 sheets
Resolution	
Paper Capacity	
Total Standard Paper Capacity	3,850 sheets
Total Max Paper Capacity	8,500 sheets
Paper Size	Tray 1: 8.5" x 11" Trays 2 - 3: 3.94" x 5.5" to 13" x 19.2" Bypass: 3.94" x 5.5" to 13" x 49.6", Envelopes
Paper Weight	Trays 1 - 3: 14 lb. Bond - 110 lb. Cover (52 - 300 gsm) Bypass Tray: 14 lb. Bond - 130 lb. Cover (52 - 360 gsm*) Auto Duplex: 14 lb. Bond - 130 lb. Cover (52 - 360 gsm*)
Warm-up Time	Standard mode (def) Less than 30 seconds. Image Quality Mode Less than 120 seconds.
Typical Electricity Consumption (TEC)*	Pro C5400S: 5.811kWh/wk Pro C5410S: 7.323kWh/wk
Standard Memory:	SSD: 480GB x 2 on board / RAM: 8GB
Max. Power Consumption ENERGY STAR 3.2	Less than 3,840 W
EPEAT	Certified Gold Rated
Power Requirements	208 - 240V, 16A, 60 Hz (dedicated)
Dimensions (W x D x H)	31.46" x 34.65" x 64.88" (incl. ADF and Status Light Pole)
Weight	Less than 606.3 lbs. (275 kg)

*Typical Electricity Consumption by ENERGY STAR program.

Printer Controllers

Fiery® Color Controller E-48B

Fiery® System Version	Fiery® F5600 Pro
Configuration	Server Type
Memory	8GB RAM (upgradable to 32GB)
CPU	Intel i3-12100 processor
Storage	240/256 GB NVMe SSD + 1TB HD SATA
Operating System	Windows 10 IoT Enterprise 2021 LTSC

Fiery® Color Controller E-28B

Fiery® System Version	Fiery® F5600
Configuration	Embedded Type
Memory	8GB RAM (upgradable to 32GB)
CPU	Intel G7400E
Storage	500 GB NVMe SSD
Operating System	Linux

Accessories

A4/LT Large Capacity Input Tray (LCIT RT5190)**

Paper Capacity	4,400 sheets
Paper Size	8.5" x 11" (Optional extension accessory available for 8.5" x 14" paper)
Paper Weight	14 lb. Bond - 80 lb. Cover (52 - 216 gsm)
Dimensions (W x D x H)	13.8" x 21.3" x 24.6"
Weight	Less than 48.5 lbs.

A3/DLT Large Capacity Input Tray (LCIT RT5180)

Paper Capacity	2,200 sheets
Paper Size	3.94 x 5.5" - 13" x 19.2"
Paper Weight	14 lb. Bond - 110 lb. Cover (52 - 300 gsm)
Dimensions (W x D x H)	34.2" x 28.7" x 25.9"
Weight	Less than 183 lbs.

Banner sheet guide tray LCIT type S13 (for RT5180)

Paper Capacity	250 sheets
Paper Size	up to 13" x 27.5"
Paper Weight	14 lb. Bond - 110 lb. Cover (52 - 300 gsm)

Vacuum Feed Large Capacity Input Tray (LCIT RT5150)

Paper Capacity	4,400 sheets (2,200 sheets x 2 Trays)
Paper Size	3.94" x 5.5" - 13" x 19.2"
Paper Weight	52 - 360 gsm
Dimensions (W x D x H)	41.5" x 28.7" x 39.4"
Weight	507 lbs.
Carbonless Paper supported with optional Carbonless Paper Unit Type S13	

Bridge Unit BU5040 (Required for the VF LCIT RT5150)

Mechanical Registration included	
Dimensions (W x D x H)	8.2" x 28.7" x 39.4"
Weight	90 lbs.

Vacuum Feed Banner Sheet Tray Type S9

Paper Capacity	730 sheets
Paper Size	8.27" x 16.54" - 13" x 27.5"
Paper Weight	52 - 360 gsm
Width of VF LCIT RT5150 will extend to 50.8"	

Multi Bypass Tray (BY5020)

Paper Capacity	500 sheets
Paper Size	3.94" x 5.5" - 13" x 19.2"
Maximum Paper size	extends up to 13" x 27.5" by adding the optional Multi Bypass Oversize Sheet Tray Type S9
Paper Weight	14 lb. Bond - 80 lb. Cover (52 - 216 gsm)

Cover Interposer (CI5040)

Paper Capacity	400 sheets (200 sheets x 2 Trays)
Paper Size	5.5" x 8.5" - 13" x 19.2"
Paper Weight	14 lb. Bond - 130 lb. Cover (52 - 350 gsm)
Air Assist	Supported
Weight	110 lbs.

Multi Folding Unit FD5040

Folding Type	Single Sheet Mode: Z-Fold, Half-Fold/ Print inside, Half-Fold/Print outside, Letter Fold-in/ Print inside, Letter Fold-in/ Print outside, Letter Fold-out. Multiple Sheets Mode: Half-Fold/Print inside, Half-Fold/Print outside, Letter Fold-in/ Print inside, Letter Fold-in/Print outside, Letter Fold-out
Paper Size	Single Sheet Mode: Z folding: 8.5" x 11" - 12" x 18"; Half folding: 8.5" x 11" - 13" x 19.2"; Letter folding: 8.5" x 11" - 12" x 18"; Double Parallel folding: 8.5" x 11" - 12" x 18"; Gate folding: 8.5" x 11" - 12" x 18". Multiple Sheets Mode: Half folding: 8.5" x 11" - 13" x 19.2"; Letter Fold-in: 8.5" x 11" - 12" x 18"; Letter Fold-out: 8.5" x 11" - 8.5" x 14"
Paper Weight	Single Sheet Mode: 17 lb. Bond - 28 lb. Bond (64 - 105 gsm) Multiple Sheets Mode: 17 lb. Bond - 21 lb. Bond (64 - 80 gsm)
Dimensions (W x D x H)	8.2" x 28.7" x 39.4"
Weight	Less than 99 lbs.

High Capacity Stacker (SK5040)

Paper Capacity	5,000 sheets
Proof tray	Additional 250 sheets
Paper Weight	52 - 360 gsm
Rollaway Cart	Standard and Optional additional carts available
Dimensions (W x D x H)	35.4" x 28.7" x 39.8"
Weight	297.6 lbs. (including rollaway cart)

RICOH Pro C5410S/C5400S

System specifications

Copy Tray Type M42

Paper Capacity	500 sheets
Paper Size	3.94" x 5.5" - 13" x 19.2"
Paper Weight	14 lb. Bond - 130 lb. Cover (52 - 360 gsm)
Dimensions (W x D x H)	13.8" x 19.7" x 6.7"
Weight	4.85 lbs.

3,000-Sheet Finisher with 65-Sheet Stapler (SR5130)**

Shift Tray	3.54" x 5.5" - 13" x 19.2"
Paper Capacity	3,000 sheets (LT_LEF), 1,500 sheets or less for all other sheet sizes
Paper Weight	14 lb. Bond - 130 lb. Cover (52 - 360 gsm)
Proof Tray	
Paper Capacity	250 sheets
Paper Weight	14 lb. Bond - 80 lb. Cover (52 - 216 gsm)
Paper Size	3.54" x 5.5" - 13" x 19.2"
Staple-less Binding Unit	Optional
Staple	
Paper Size	7.25" x 10.5" - 11" x 17" - 2 to 65 sheets
Staple Paper Weight	Up to 105 gsm
Staple Position	Top, Bottom, 2 Staples, Top Slant, Bottom Slant
Dimensions (W x D x H)	25.9" x 28.7" x 38.6"
Weight	88.2 lbs.

3,000-Sheet Booklet Finisher with 65-Sheet Stapler (SR5140)**

Shift Tray	
Paper Capacity	3,000 sheets
Paper Weight	14 lb. Bond - 130 lb. Cover (52 - 360 gsm)
Proof Tray	
Paper Capacity	250 sheets
Paper Weight	14 lb. Bond - 80 lb. Cover (52 - 216 gsm)
Paper Size	3.54" x 5.5" - 13" x 19.2"
Output Jogger	Optional
Cooling Fan	Optional
Punch 2/3 hole	Optional
Staple	
Paper Size	7.25" x 10.5" - 11" x 17" - 2 to 65 sheets
Paper Weight	Up to 105 gsm
Position	Top, Bottom, 2 Staples, Top Slant, Bottom Slant
Dimensions (W x D x H)	25.9" x 28.7" x 38.6"
Weight	132.3 lbs.

Staple-less Binding Unit Type S16 (For SR5130 & SR5140 only)

Staple Position and Paper Size	Corner: 16 sheets: 8.5"x11"(SEF) - 11"x17" 2 spots: 12 sheets: 8.5"x11"(SEF) - 11"x17"
Paper Weight	52 - 105gsm *Binding quality is not guaranteed for paper less than 64 g/m ² or over 80.1 g/m ²

4,500-Sheet Finisher with 100-Sheet Stapler (SR5110)

Paper Capacity	
Lower Shift Tray	3,500 sheets
Upper Shift Tray	1,000 sheets
Paper Weight	14 lb. Bond - 130 lb. Cover (52 - 360 gsm)
Punch 2/3 hole	Optional
Dimensions (W x D x H)	39.2" x 28.7" x 55.7"
Weight	298 lbs.

3,500-Sheet Booklet Finisher with 100-Sheet Stapler (SR5120)

Paper Capacity	
Lower Shift Tray	2,500 sheets
Upper Shift Tray	1,000 sheets
Paper Weight Upper Tray	14 lb. Bond - 130 lb. Cover (52 - 360 gsm)
Paper Weight Lower Tray	14 lb. Bond - 130 lb. Cover (52 - 360 gsm)
Punch 2/3 hole	Optional
Saddle Stitch Staple	14 lb. Bond - 130 lb. Cover (52 - 350 gsm)
Paper Size	7.2" x 10.2" - 13" x 19.2"
Paper Weight	52 - 80 gsm up to 30 sheets / 120 pages
Dimensions (W x D x H)	39.2" x 28.7" x 55.7"
Weight	353 lbs.

Booklet Trimmer (TR5050 for SR5120 Finisher)

Trimming Type	One Side Edge
Trimming Capacity	up to 30 stapled and folded sheets / 120 pages (80 gsm)
Paper Size	7.2" x 10.2" - 13" x 19.2"
Stack Capacity	Up to 60 sets
Limitless Stack	Supported
Dimensions (W x D x H)	43.9" x 23.3" x 21.9"
Weight	166 lbs.

GBC StreamPunch Plus

Paper Sizes	5.5" x 8.5", 8.5" x 11", 8.5" x 14", 11" x 17", 12" x 18", 12.6" x 19.2", 13" x 19"
Paper Weight	20 lb. Bond - 110 lb. Cover (75 - 300 gsm)
Tab Punching	Supported
"Two-Up" Punching	Supported
Dimensions (W x D x H)	17.5" x 28.7" x 39.4"
Weight	220 lbs.

GBC StreamWire (GBC StreamPunch Plus is required)

Paper Sizes	8.5" x 11" (LEF)
Paper Weight	20 lb. Bond - 110 lb. Cover (75 - 300 gsm)
Number of Loops	8.5" x 11" (LEF) - 32 loops
StreamWire Supply	Black, White, or Silver
	Up to 30, 50, 60, 70, 80, or 100 Sheets
Tab Stock	Supported
Dimensions (W x D x H)	34" x 38" x 34"
Weight	500 lbs.

** Different color scheme to that of mainframe and other accessories.

Plockmatic Square Back Trimmer

Trimming Type	One Side Edge
Three side Trimming	Manual feeding via Operator assisted process
Folding Type	Square Back Fold
Trimming Capacity	up to 30 stapled and folded sheets / 120 pages (80 gsm)
Paper Size	7.2" x 10.2" - 12.6" x 19"
Dimensions (W x D x H)	69.3" x 26" x 41.9"
Weight	392 lbs.

Plockmatic PBM435e Booklet Maker

Paper Size	5.7" x 8.3" - 12.6" x 26"
Paper Weight	17 lb. Bond - 110 lb. Cover (64 - 300 gsm)
Set Size	2 - 35 sheets - 80 gsm 2 - 50 sheets - 80 gsm (PBM 50-sheet upgrade kit needed)
Dimensions (W x D x H)	59.5" x 28.3" x 44.5" (includes output stacker)
Weight	500 lbs.
Optional	50-sheet upgrade kit, FM400e Finishing Module, CT XL, and BST4000 High Cap Belt Stacker

Additional Accessories

Envelope Fusing Unit, Decurl Unit DU5080, Buffer Pass Unit Type S9, Bridge Unit BU5020, Media Identification Unit, PostScript3 Unit Type M42, IPDS Unit Type M42, VM Card Type P18, OCR Unit Type M13, 8 1/2" x 14" Paper Size Tray Type S18, Multi Bypass Banner Sheet Tray Type S9 (for Multi Bypass Tray BY5020), A3/11" x 17" Tray Unit Type M26, Optional Feed Roller Unit Type S18, Carbonless Paper Unit Type S18, SR4000 series Output Tray for Banner Sheet Type S6 (for SR5110/5120), SR5000 series Output Tray for Banner Sheet Type S6 (for SR5130/5140)

Consumables

CMY Toner Yield	30K prints/bottle*
K Toner Yield	34K prints/bottle*
Waste Toner Bottle Yield	110K prints/bottle*
*Based on 8.75% coverage (Letter)	

TCRU Program	Supported
--------------	-----------

Workflow Solutions Supported

Ricoh Streamline NX, Ricoh Global Scan NX, Ricoh Integrated Cloud Environment, Ricoh Smart Integration, RICOH ProcessDirector*, RICOH, RICOH TotalFlow BatchBuilder, RICOH @Remote, ePS*, DigitalStoreFront*, Fiery Color Profiler Suite, Fiery* Graphic Arts Pro, Fiery ColorRight, Fiery Automation, Fiery Central, Objectif Lune

Specifications subject to change without notice.



RICOH Subsidiaries:

RICOH Argentina S.A.
www.ricoh-americalatina.com/es-ar

RICOH El Salvador, S.A. de C.V.
www.ricoh-americalatina.com/es-sv

RICOH Brasil S.A.
www.ricoh-americalatina.com/pt-br

RICOH Guatemala, S.A.
www.ricoh-americalatina.com/es-gt

RICOH Chile S.A.
www.ricoh-americalatina.com/es-cl

RICOH Mexicana, S.A.
www.ricoh-americalatina.com/es-mx

RICOH Colombia S.A.
www.ricoh-americalatina.com/es-co

RICOH del Perú S.A.C.
www.ricoh-americalatina.com/es-pe

RICOH Costa Rica S.A.
www.ricoh-americalatina.com/es-cr

RICOH Panamá, S.A.
www.ricoh-americalatina.com/es-pa

RICOH Dominicana, S.R.L.
www.ricoh-americalatina.com/es-do

RICOH Puerto Rico, Inc.
www.ricoh-americalatina.com/es-pr

Distribution Centers:

**RICOH Distribution Center
Panamá**

**RICOH Operations Center
Uruguay**
www.ricoh-americalatina.com/es-uy

Authorized Dealers:

BRC Printing, Belize
www.brcprinting.com

Cariburo, St. Martin (French)

**Copiadora Ecuatoriana
SAS-ECUACOPIA, Ecuador**
www.grupoecuacopia.com

**Copy Solution International
S.A., Dom. Republic**
www.grupocsi.com.do

D.O.S. 2009, Ltd, Jamaica
www.dosjm.com

Dima Ltda, Bolivia
www.dima.com.bo

Dimacofi S.A., Chile
www.dimacofi.cl

**Diplux de Venezuela C.A.,
Venezuela**
www.diplux.com.ve

Estratec S.A. de C.V., México
www.estrateg.com

External Market S.A., Argentina
www.external-market.com.ar

Hermoso y Vigil S.A., Nicaragua
www.hermosoyvigil.com.ni

J. Fleischman, Paraguay.
www.jfleischman.com

Videocorp A RICOH Company
www.videocorp.com

**John Bull Business Center,
Bahamas**

**Kirk Office Equipment,
Cayman Islands**
www.kirkoffice.ky

**Amaranth Business Solutions
Limited, Trinidad/Barbados/
Jamaica**
www.amaranthbusinessolutions.com

**Microtech Sales and Service
Ltd., Bahamas**

**Multipost, Curacao
(Netherland Antilles)**
www.multipost.com

Office Star, Haiti
www.offistar.net

Plus Ultra, Uruguay
www.plusultra.com.uy

**Sistemas Operativos
Argentinos S.A., Argentina**
www.sistemas-operativos.com.ar

**Suministros Técnicos S.A.,
Honduras**
www.sumitec.hn

Technoma, Paraguay
www.technoma.com.py

Ricoh LATAM

Please contact us for more information at:



www.ricoh-americalatina.com/en



Ricoh Latin America Inc



RicohLatinAmerica



RicohLatinAmerica



ricohlatinamerica



ricohla

RICOH
imagine. change.

All rights reserved Ricoh LATAM. Ricoh and the Ricoh logo are registered trademarks of Ricoh Company, Ltd. All other trademarks are the property of their respective owners. The content of this document, and the appearance, features and specifications of Ricoh products and services are subject to change from time to time without notice. Products are shown with optional features. While care has been taken to ensure the accuracy of this information, Ricoh makes no representation or warranties about the accuracy, completeness or adequacy of the information contained herein, and shall not be liable for any errors or omissions in these materials. Actual results will vary depending upon use of the products and services, and the conditions and factors affecting performance. The only warranties for Ricoh products and services are as set forth in the express warranty statements accompanying them.